

Landesvermessungsamt
Nordrhein-Westfalen
Landesvermessungsamt Nordrhein-Westfalen

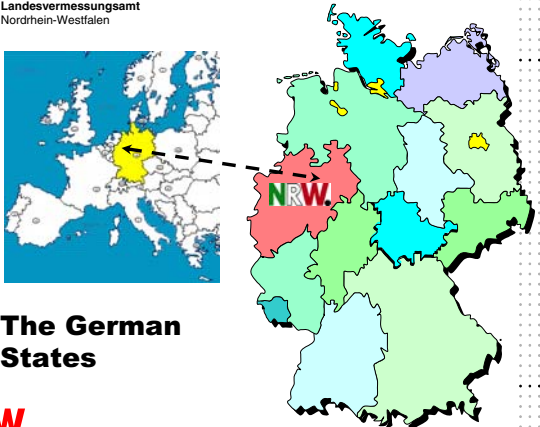


**SDI's as basic components
of e-Government and e-Business
- - The German approach - -**

NRW.

GSDI/FIG conference 2005, Cairo, 16 – 21 April 2004

Landesvermessungsamt
Nordrhein-Westfalen



The German States

NRW.

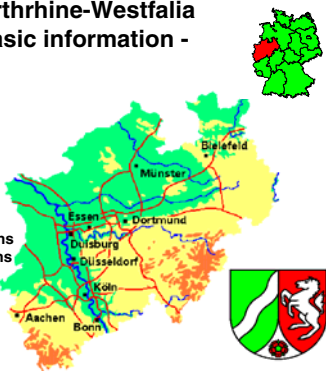
Landesvermessungsamt
Nordrhein-Westfalen

**Northrhine-Westfalia
- basic information -**

18 Mio inhabitants
34,000 qkm area
530 inhabitants / qkm

9 Mio parcels
7 Mio buildings
10 % updates / year

NRW Budget 1997: 90 billions
BIP_(nom)1995: 700 billions



NRW.

Landesvermessungsamt
Nordrhein-Westfalen

**Northrhine-Westfalia
- basic information -**

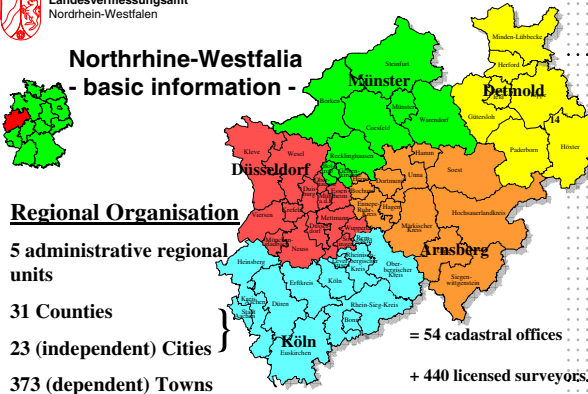
Regional Organisation

5 administrative regional units

31 Counties

23 (independent) Cities } = 54 cadastral offices

373 (dependent) Towns } + 440 licensed surveyors.



NRW.

Landesvermessungsamt
Nordrhein-Westfalen

State Surveying and Geoinformation as public tasks

- Provision of spatial reference (Reference points, Reference stations, satellite positioning service, coordinate systems)
- Survey of geotopographical base data (TIM)
- Management of the geobasis information system (AFIS, ALKIS, ATKIS)
- Publication of the state map series
- Management of the state archives for aerial photos and maps
 - ⇒ connection to the cadastre
 - ⇒ public-private cooperation
 - ⇒ State surveying and geoinformation as public tasks
 - ⇒ public enterprise

NRW.

Landesvermessungsamt
Nordrhein-Westfalen

Official Geobasis Data

- Terms „official“ and „Geobasis Data“
- Geobasis data of the States
- Geobasis data of the Federation
- Geobasis data of the Municipalities
- „official“ business processes

NRW.

Landesvermessungsamt
Nordrhein-Westfalen

Basic Geoinformation in Germany

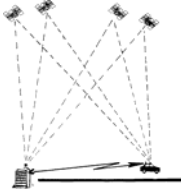
- Satellite Positioning System (**SAPOS**)
- Official Reference Point Information System (**AFIS**)
- Authoritative Topographic-Kartographic Information System (**ATKIS**)
- Official Cadastre Information System (**ALKIS**)

NRW.


Landesvermessungsamt
Nordrhein-Westfalen

Permanent GPS-Reference stations of Survey Administration


SAPOS®
Satellite Positioning Service



Reference points



Navigation
Fleet management



Cadastr

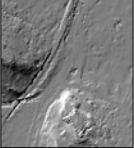
... realize the spatial reference system of the survey administration by providing satellite data und correcting information for differential measuring methods

NRW.


Landesvermessungsamt
Nordrhein-Westfalen

Products


of Surveying & Mapping Agency NRW




- Elevation Models



- Analog Landscape Models -



- Image Models




- Digital Landscape Models -

NRW.


Landesvermessungsamt
Nordrhein-Westfalen

Services


of Surveying & Mapping Agency NRW




- Geodetic Reference



- Topographic Change Detection -



- Cartography & Reproduction




- Know How Transfer -

NRW.

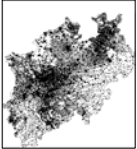
Landesvermessungsamt
Nordrhein-Westfalen

Geodata centre


of Surveying & Mapping Agency NRW




- Cadastre Data



- Address Reference -

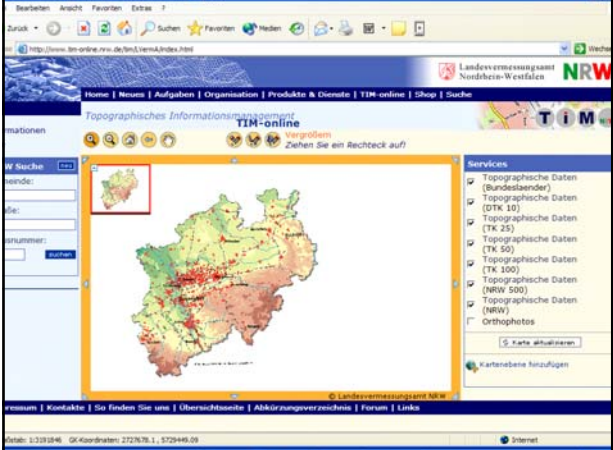


- Standard Values of Real Estate

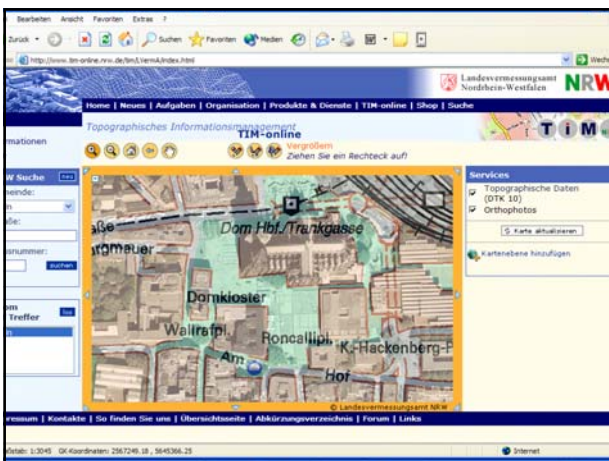
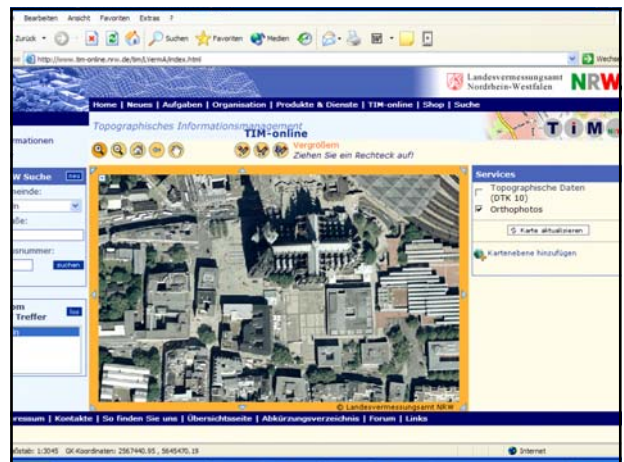
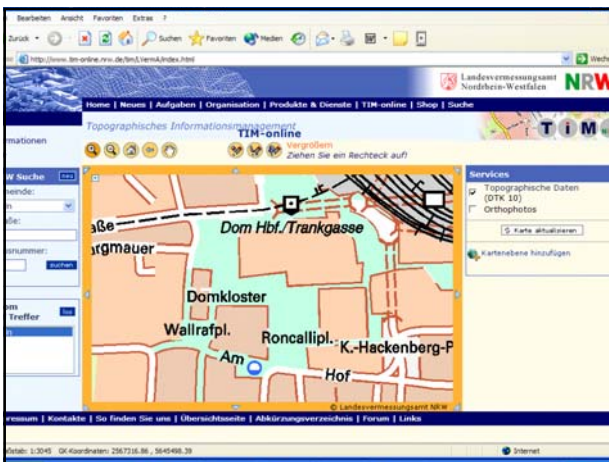
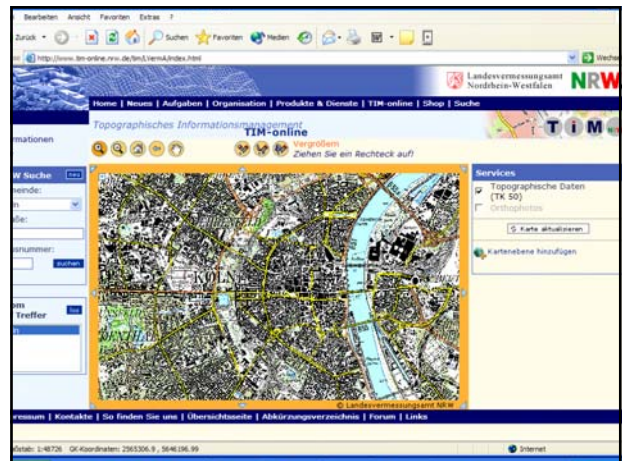
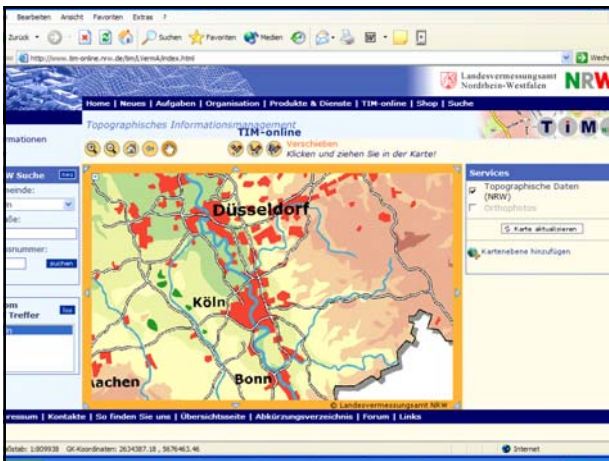


- Landscape Models -

NRW.



The screenshot shows the TIM-online web application interface. It features a map of North Rhine-Westphalia with various data layers overlaid. The interface includes a search bar, navigation tools, and a list of data layers on the right side, such as 'Topographische Daten (Bundeslaender)', 'Topographische Daten (DTK 10)', 'Topographische Daten (TK 25)', 'Topographische Daten (TK 50)', 'Topographische Daten (TK 100)', 'Topographische Daten (Neu 500)', and 'Topographische Daten (NRW)'. There is also an option for 'Orthophotos' and a 'Kartenebene hinzufügen' button.



Landesvermessungsamt
Nordrhein-Westfalen

Products

Building reference points NRW

- Polizei
- BORIS (Bodenrichtwertinformationssystem)
- ÖPNV

