



**USAID**  
FROM THE AMERICAN PEOPLE

**FRAME**  
Knowledge Sharing for the  
Natural Resource Community

**IRG**  
International Resources Group

# Knowledge Sharing for Natural Resource Management and Development

Lauren Sorkin, FRAME Outreach  
Coordinator

November 6, 2006



**USAID**  
FROM THE AMERICAN PEOPLE

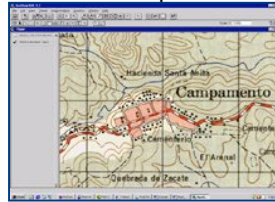
## What is FRAME?

- FRAME is a USAID-funded program to build knowledge sharing networks of natural resource management professionals. The program's two main goals are:
  - Capturing knowledge
  - Sharing knowledge
- To reach these goals, the FRAME program initiates field studies, organizes workshops, distributes an electronic newsletter, and supports the website:  
[www.frameweb.org](http://www.frameweb.org)

## What is ETA?

- Environmental Trends Analysis (ETA) describes environmental processes and human-environmental relationships in terms of space and time including:

- Statistical techniques
- Simulation modeling
- Spatial modeling
- Expert consultations



- ETA methods for collecting accurate information on ecological processes and the human impact on the environment are a critical resource for decision making in the natural resource management (NRM) arena.
- ETA fits very well with FRAME's objective of disseminating information about best practices in NRM and fostering communities of practice focused around common interest areas.

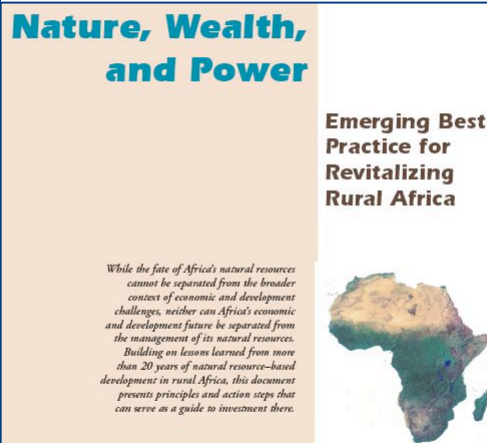
## Why Join GSDI-9 in Chile?

- The FRAME project shares several goals with the International Conference for Global Spatial Data Infrastructure including:
  - Making available decision-support tools. In particular, supporting training as well as website-based support for Environmental Trends Analysis.
  - Supporting the integration of NRM and other sectors that aim to spur rural economic growth, reduce poverty, and strengthen governance.

## Poverty alleviation and natural resource management

- The theme of this year's annual meeting "Tools for reducing poverty" is clearly linked to natural resource management.
- For many of the world's poorest, natural resources are the most significant, and sometimes only, asset for economic growth.
- "The question is not **whether** these resources will be used but rather, **how** these resources will be used; **who** will benefit; and will the resource be available for future generations?" –Asif Shaikh
- GSDI's choice to focus on how spatial data can be used as a tool for reducing poverty by including social welfare and environmental issues links directly to FRAME's objectives and the Nature, Wealth and Power framework.

## Nature, Wealth and Power



**Nature, Wealth, and Power**

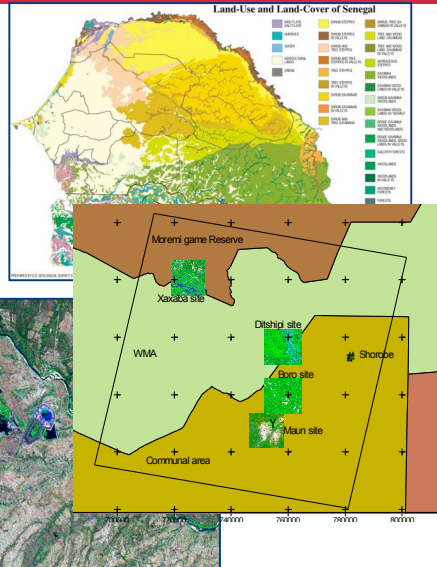
**Emerging Best Practice for Revitalizing Rural Africa**

*While the fate of Africa's natural resources cannot be separated from the broader context of economic and development challenges, neither can Africa's economic and development future be separated from the management of its natural resources. Building on lessons learned from more than 20 years of natural resource-based development in rural Africa, this document presents principles and action steps that can serve as a guide to investment there.*

- FRAME assessments and activities are guided by the Nature, Wealth and Power framework that works to identify actions and the enabling environment that most effectively connect Natural Resource Management (NRM) with economic growth, poverty reduction and stronger governance.

## Tools for Decision Making

- Each participant in the ETA community brings a unique approach to natural resource management.
- Sharing experiences and lessons learned leads to better decision making.
- Building a community around shared interests helps people to work smarter.



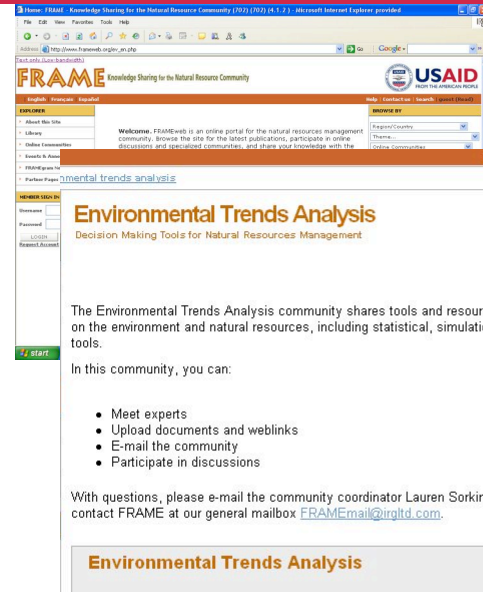
## Knowledge Management

- How do you do it?
  - Workshops and meetings, newsletters, publications
  - Communities of Practice
  - Expert groups
  - Communicating between programs in different regions
  - Online discussions
  - And more...



## FRAMEweb- Useful Tools

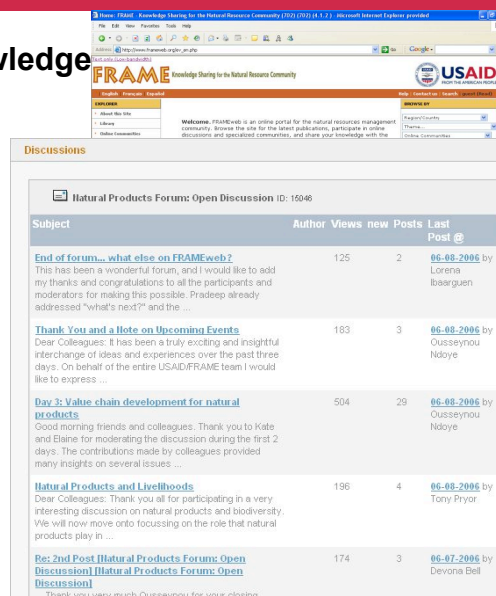
- FRAME web: Online portal for the natural resource management community
  - Online communities
  - Expert database
  - NRM Resources
  - Global NRM community



The screenshot shows the FRAMEweb website interface. The main heading is "Environmental Trends Analysis" with the subtitle "Decision Making Tools for Natural Resources Management". Below this, there is a paragraph: "The Environmental Trends Analysis community shares tools and resources on the environment and natural resources, including statistical, simulation tools." This is followed by a list of activities: "Meet experts", "Upload documents and weblinks", "E-mail the community", and "Participate in discussions". At the bottom, it says "With questions, please e-mail the community coordinator Lauren Sorkin contact FRAME at our general mailbox [FRAMEEmail@irtgtd.com](mailto:FRAMEEmail@irtgtd.com)."

## Using FRAME to share knowledge

- Things to do on FRAMEweb:
  - Access resources
  - Create publicity for your events
  - FRAMEgram Newsletter
  - Participate in discussions
  - Establish a partner page or online community
  - “Find an Expert”/ Ask the FRAME community

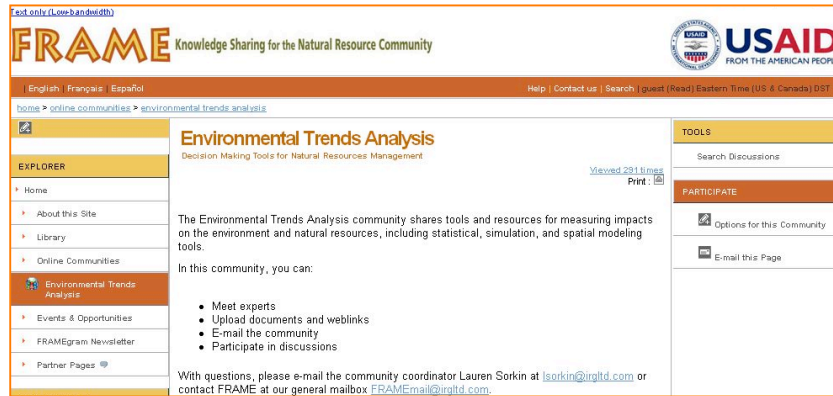


The screenshot shows the "Discussions" section of the FRAMEweb website. It features a table with columns for "Subject", "Author", "Views", "new", "Posts", and "Last Post @".

Subject	Author	Views	new	Posts	Last Post @
<a href="#">End of forum... what else on FRAMEweb?</a>	Lorena Ibaerguen	125		2	06-08-2006
<a href="#">Thank You and a Note on Uncommon Events</a>	Ndoye	183		3	06-08-2006
<a href="#">Day 3: Value-chain development for natural products</a>	Ndoye	504		29	06-08-2006
<a href="#">Natural Products and Livelihoods</a>	Tony Pryor	196		4	06-08-2006
<a href="#">Re: 2nd Post (Natural Products Forum: Open Discussion) (Natural Products Forum: Open Discussion)</a>	Devona Bell	174		3	06-07-2006

## ETA- A Global Community

- Environmental Trends Analysis: A Global Community  
– [www.frameweb.org/eta](http://www.frameweb.org/eta)



**FRAME** Knowledge Sharing for the Natural Resource Community

English | Français | Español Help | Contact us | Search | guest (Read) Eastern Time (US & Canada) DST

Home > online communities > environmental trends analysis

**Environmental Trends Analysis**  
Decision Making Tools for Natural Resources Management

Viewed 231 times | Print: 1/1

The Environmental Trends Analysis community shares tools and resources for measuring impacts on the environment and natural resources, including statistical, simulation, and spatial modeling tools.

In this community, you can:

- Meet experts
- Upload documents and weblinks
- E-mail the community
- Participate in discussions

With questions, please e-mail the community coordinator Lauren Sorokin at [lsorokin@irgild.com](mailto:lsorokin@irgild.com) or contact FRAME at our general mailbox [FRAMEmail@irgild.com](mailto:FRAMEmail@irgild.com).

**TOOLS**  
Search Discussions

**PARTICIPATE**  
Options for this Community  
E-mail this Page

## Next Steps



- Post documents and links
- Share contacts and expand the network
- Work with FRAME to disseminate information about your projects

**FRAME wants you!**



Thank you for listening

[Lsorkin@irgltd.com](mailto:Lsorkin@irgltd.com)

[Framemail@irgltd.com](mailto:Framemail@irgltd.com)